

Technical data sheet

Flow control valve NG 6

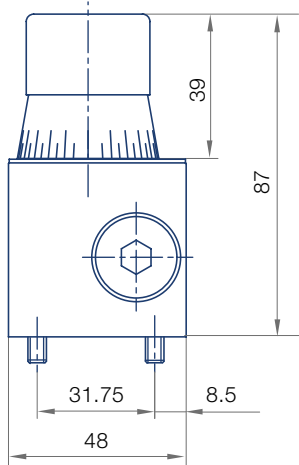


Advantages

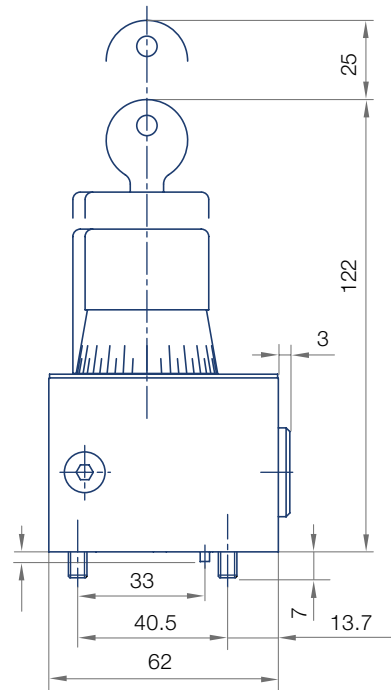
- + Flow from 10 cm³/min
- + Reproducibility even with low flow rates
- + Fluid flow can be controlled nearly independently of pressure and viscosity
- + Controlled range of up to 3 rotations
- + Sensitive adjustment
- + Connection according to ISO 4401

Dimensional Drawing

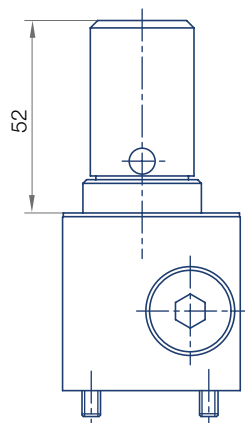
Actuation D



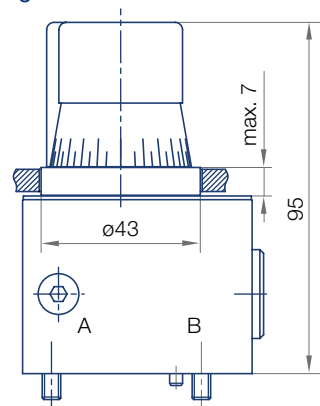
Actuation V



Actuation K und P

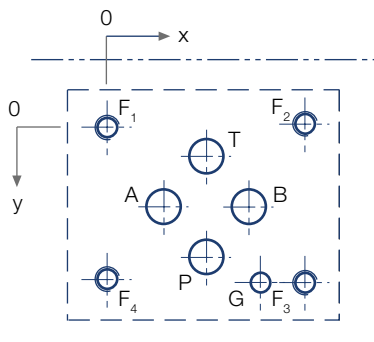


Front panel mounting



all dimensions in mm

Port Connection Pattern NG 6 ISO 4401



F: M5, thread depth min. 1.5 x Ø
G: hole depth min. 1.5 x Ø

	P	A	T	B	F1	F2	F3	F4	G
Ø max [mm]	7.5	7.5	7.5	7.5	-	-	-	-	4
x [mm]	21.5	12.7	21.5	30.2	0	40.5	40.5	0	33
y [mm]	25.9	15.5	5.1	15.5	0	-0.75	31.75	31	31.75

For connection of the flow control valve, the ports A and B are used.
Various single and multiple mounting plates are available.

The figure shows the side of the mounting plate to which the valve is fastened.

Technical Data

General

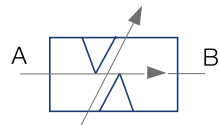
Type of valve	gap-type throttle valve
Operation	rotary knob
Angle of rotation, 1 rotation	330°
Angle of rotation, 2 rotations	690°
Angle of rotation, 3 rotations	1050°
Valve mounting	2x M5 x50 DIN912
Connection of ports	mounting plate
Mounting position	mountable in any position
Ambient temperature	-5°C to +50°C
Mass valve	1 kg

Hydraulic

Operation pressure A, B	max. 250 bar
Hydraulic oil temperature	-10 to +70 °C
Viscosity range	10 to 300 mm ² /s
Rate of flow	max. 9 l/min

Symbol

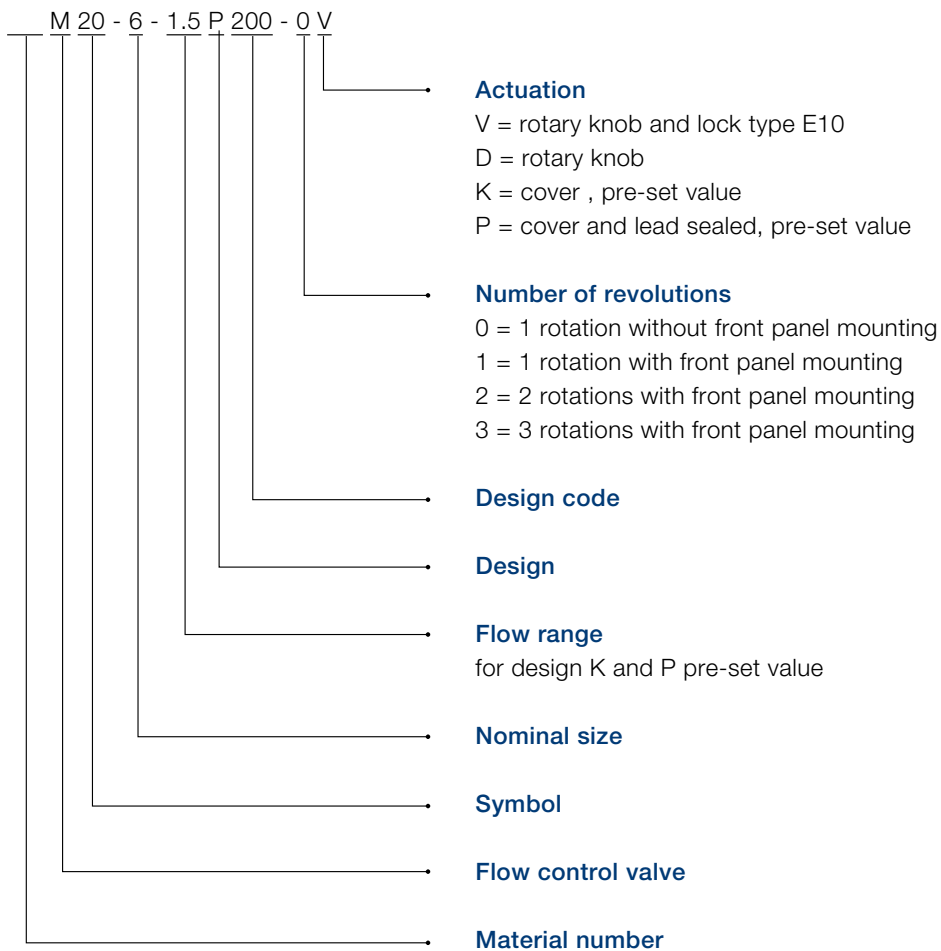
20



Flow range

Flow [cm ³ /min]		Code	Rotation		
min	max		1 (330°)	2 (690°)	3 (1050°)
10	100	0.1	X		
10	200	0.2	X		
10	400	0.4	X		
25	500	0.5	X		
25	700	0.7	X		
50	1500	1.5	X	X	
100	3000	3.0	X		
150	6000	6.0	X	X	
20	8000	8.0		X	X
20	1200	1.2		X	X
20	3000	3.0		X	
20	6000	6.0			X
20	9000	9.0		X	

Type code



Voith Group
St. Poeltener Str. 43
89522 Heidenheim
Germany

www.voith.com/hydraulics

Contact:
Phone +49 7152 992 3
sales-rut@voith.com



VOITH
Inspiring Technology
for Generations